



Globe
Academy

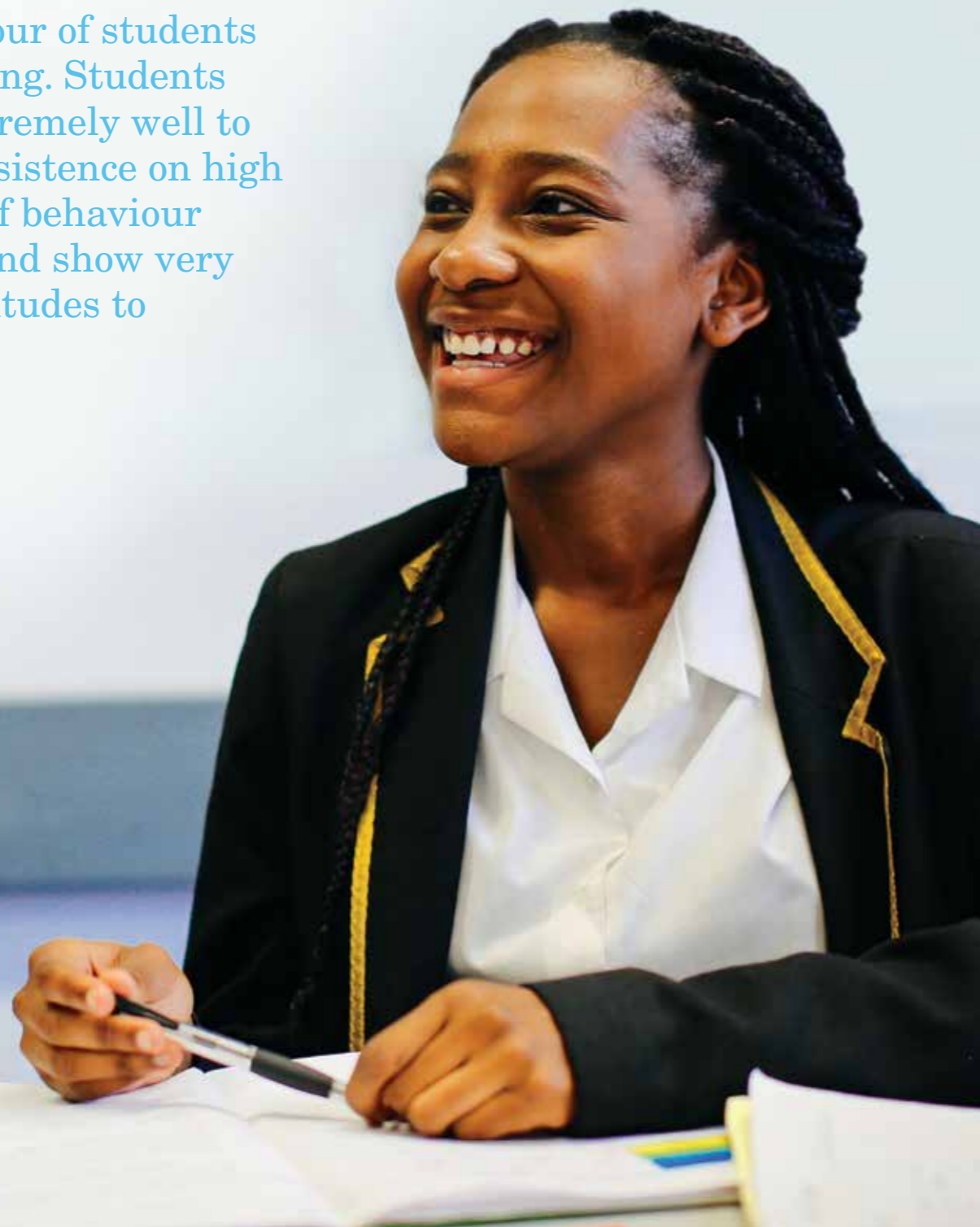
Ark Globe Academy Secondary



Preparing our students for university and to be leaders in their community

“The behaviour of students is outstanding. Students respond extremely well to teachers’ insistence on high standards of behaviour in lessons and show very positive attitudes to their work.”

Ofsted



Welcome to Ark Globe Academy



At Ark Globe Academy we have the highest aspirations for all our children to ensure they are prepared for university and inspired to be leaders in their community. We offer our students a first class education based on high quality teaching and experiences outside of the classroom.

As Principal I am privileged to work with an amazing group of adults and children who are striving together to ensure every child has the opportunity to reach their full potential and pursue the career of their choice.

Our school is a happy school and we pride ourselves on the relationships our staff have with our students, caring for them throughout their education and into employment. We also work closely with families to ensure that all our students are committed to learning and develop the character necessary to take advantage of all the opportunities we provide.

All of our year 13 students received an offer from a university, 60% of which were from a Russell Group university (top research universities). Our school was recently recognised by the Government in its Parliamentary Review as an example of good practice in education and we are ranked in the top 5% of schools nationally.

We very much welcome visits to the school and I strongly encourage you to arrange a visit so you can experience the richness of Ark Globe Academy first-hand.

Matt Jones
Principal

It is a great honour to be involved with Ark Globe Academy.

Ark Globe Academy is part of the Ark Schools family, which is committed to high achievement for all its students and which places the highest possible value on their education.

As the Chair of Governors I look forward to building strong partnerships with parents, staff, governors and students and to supporting the work of all involved in helping our young people find and realise their goals.

I would like to take this opportunity to welcome you to Ark Globe Academy and I hope that when you read this prospectus you will share our vision of creating an exceptional school with the highest aspirations for all our students.

Jacqueline Russell
Chair of Governors

Why choose Ark Globe Academy for your child?

Achievement and high aspirations

Our mission is to prepare our students for university and to be leaders in their community. We have the highest aspirations for every child at Ark Globe Academy to ensure they are ready for university and aspire to be the leaders of tomorrow.

Care and commitment

Our dedicated, committed staff offer outstanding care and guidance for each child. Relationships underpin our achievements as we believe by knowing every child well we can help them achieve their true potential.

Enrichment and opportunities

Learning for us reaches far beyond the classroom and we provide all children with numerous enrichment and leadership opportunities; from activities before and after lessons, to visits to the best theatres and links with high quality employers and universities.

Partnering with our community

We are proud to be part of and serve our local community. With this in mind we ensure that our students are socially aware and contribute to activities which strengthen our neighbourhood.



“I’ve always been around ambitious people at Globe. With their passion about social justice and reaching our goals, my community at Globe has provided me with a never ending source of inspiration.”

**Zareen, Ark Globe Alumna
Achieved 3A* in 2017 and
is now at the University
of Cambridge**

Achievement for all

With the right teaching and support every child can realise their potential. Our culture of high expectations and achievement requires hard work and discipline. We do everything possible to ensure that every child achieves expectations for their age, every year:

Extra time

Students have 30 hours of formal lessons each week, five more than is typical. This helps them progress rapidly and gives teachers more time to understand every students’ needs. Extending our school day, providing residential learning opportunities and taking homework seriously provides more time for learning.

Extra special teachers

We are staffed to keep class sizes small. We have well qualified, specialist teachers in all subject areas, backed by very able support staff so that all students are challenged to do well and feel safe and supported.

Extra commitment

Students, parents and teachers each sign our home-school agreement, demonstrating our shared commitment to ensuring that each child succeeds.

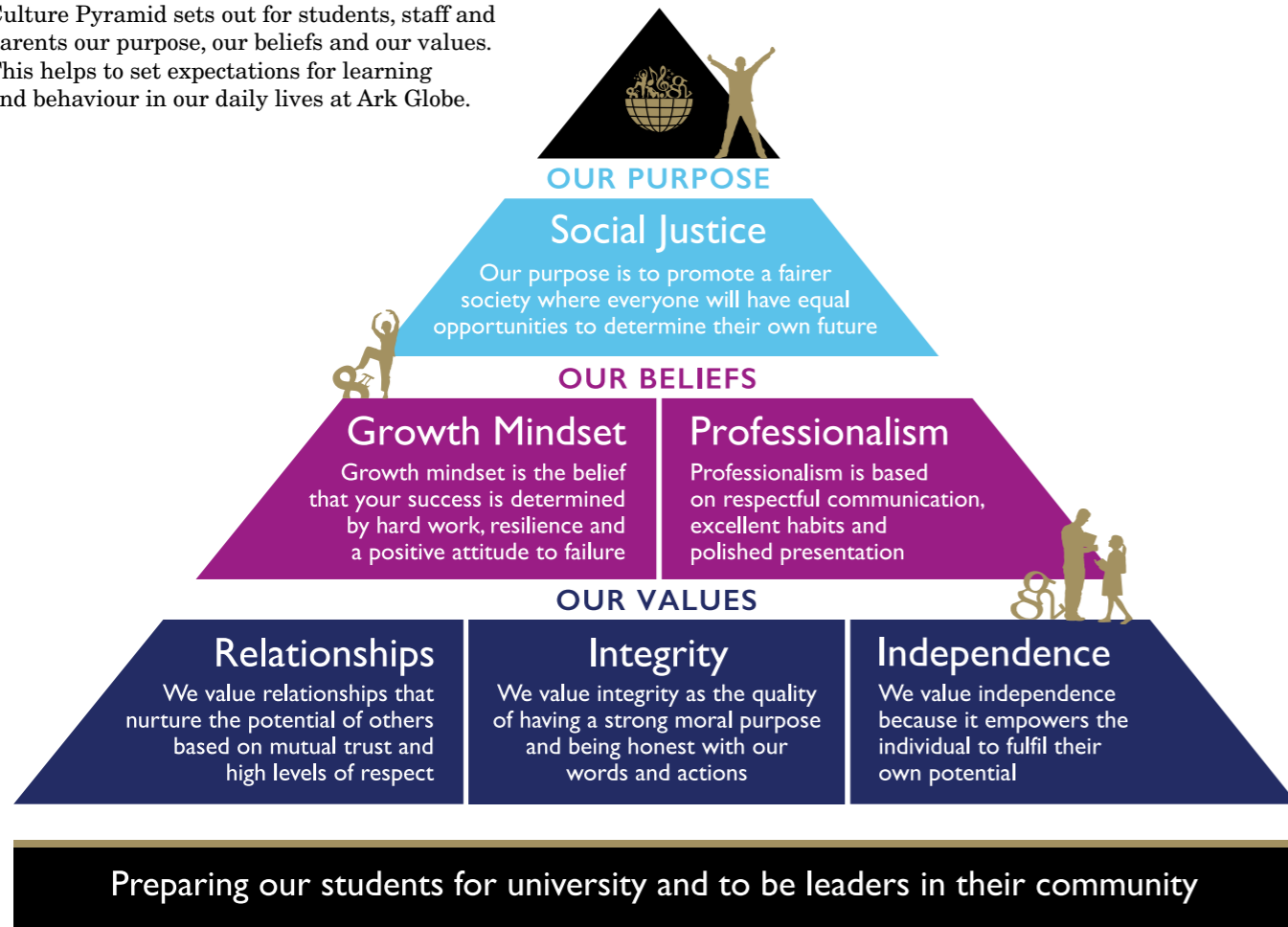


With the right teaching and support every child can realise their potential.

Our Culture Pyramid

Our mission

Our mission at Ark Globe Academy is to prepare our students for university and to be leaders in their community. Supporting this mission our Culture Pyramid sets out for students, staff and parents our purpose, our beliefs and our values. This helps to set expectations for learning and behaviour in our daily lives at Ark Globe.



Caring and supportive

An all-through education based on strong relationships

With classes from nursery to Sixth Form, our students can remain in the academy throughout their school career, building strong friendships and easing the sometimes daunting transition to secondary school.

Our small school structure ensures that we know every student, they each know their teachers and learning leaders well and that their needs are fully supported, both academically and pastorally. Our extended learning family time at the end of the school day also equips our students with an enhanced understanding of how they can improve as learners, and to develop their confidence about social and cultural issues and opportunities. Our five small schools are:

- A nursery and primary section, Ark Globe Academy Primary (3–11years)
- Two separate small schools for students of 11–14 years old (Elbrus and McKinley)
- A school for 14–16 year olds (Kilimanjaro)
- Sixth Form, for 16–18 year olds (Everest)

Led by the academy Principal each school has its own Headteacher. This enables staff and students to develop strong relationships that help to maintain a culture of excellent behaviour and develop a strong sense of community.

Starting secondary school

We run a series of events in the run up to September designed to help the transition from Year 6 to 7. From taster days and Summer schools to fun barbecues and residential trips, we aim to ensure that our new Year 7 have lots of opportunities to make friends, see the academy and meet their new teachers ahead of starting here.

“The school’s work to keep pupils safe and secure is outstanding”.

Ofsted



Developing independent learners

Our curriculum

Our curriculum has been designed to not only enable students to access the best universities but also to provide them with the skills needed to become leaders in their community. Our aim is to create independent young men and women who have the knowledge, skills and motivation to make a difference to the world around them.

The curriculum focuses on depth before breadth and follows a mastery approach where the key knowledge and the conceptual understanding required for a subject is developed across the key stages. There is a specific focus on literacy and numeracy with extra support provided where necessary to ensure all students progress.

We believe that all students have the ability to excel and consciously teach them to challenge and push themselves through embedding a growth mindset into the curriculum. This means that students are encouraged to see attainment not as something that is fixed but as something that develops with hard work and perseverance.

We have a two-year Key Stage 3, with students choosing their GCSE/BTEC options in Year 8. This enables students to begin their chosen options in Year 9, providing them with a foundation year prior to Key Stage 4. At Key Stage 4 we want as many pupils as possible to follow the English Baccalaureate as this will provide them with the more choices post-16. The English Baccalaureate requires students to take GCSEs in English, maths, science, history or geography and a foreign language.

The curriculum has been designed to give students access to the best opportunities after Ark Globe, including entrance into a Russell Group university and the top professions, with the ultimate goal being that they become leaders in their community and masters of their own destiny.



Measuring progress

Throughout the year we invite parents to Student Performance Appraisal Evenings. Such evenings inform parents about their child's effort towards their studies, their level of professionalism and their academic progress. At the meeting students are able to set targets for future learning and enable us to celebrate their success.

Our specialist subjects

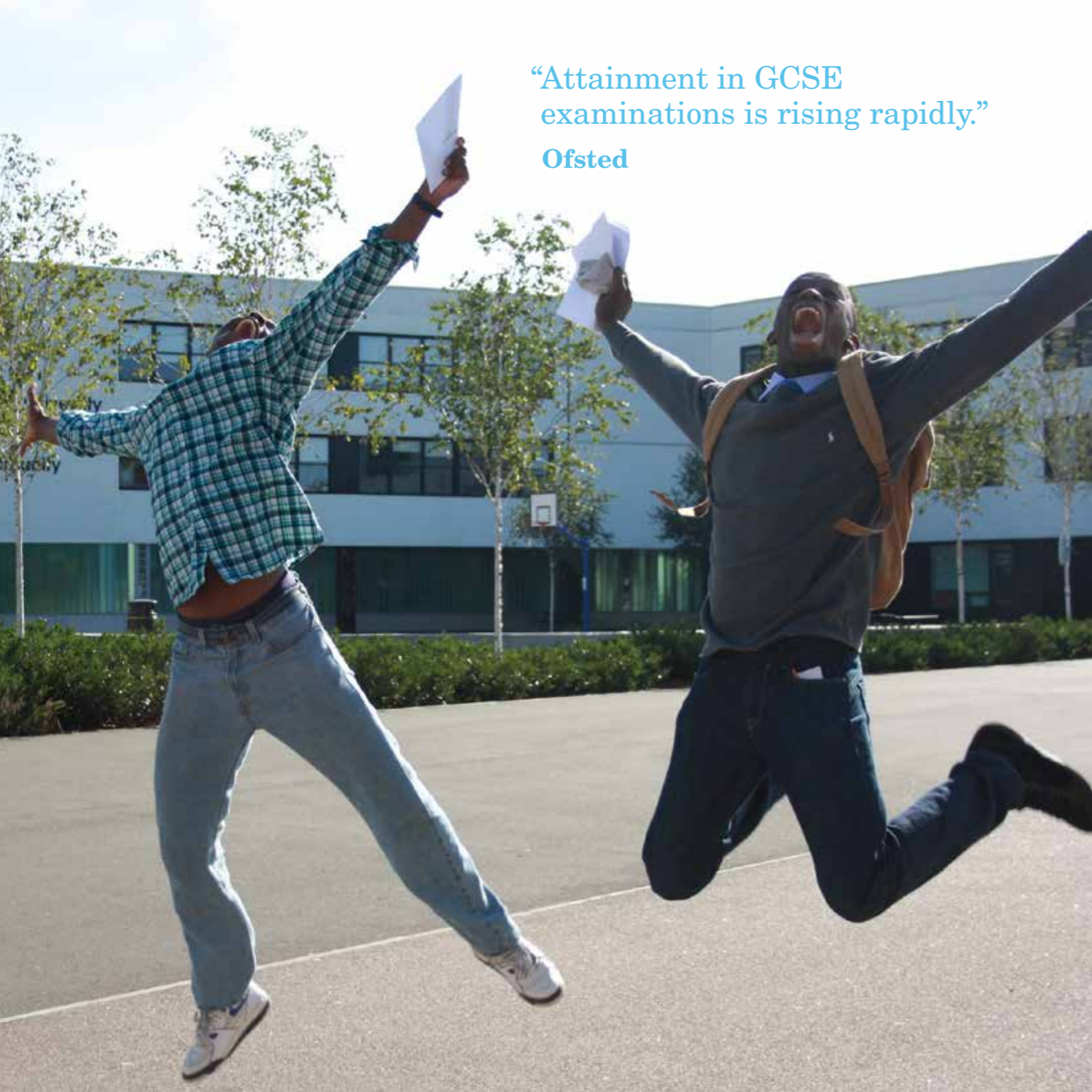
At Ark Globe, we specialise in mathematics and the performing arts.

The mathematics department adopts a 'Mathematics Mastery' approach to teaching and learning. This is an innovative mathematics programme based on international best practice and gives students opportunities to gain a deeper understanding of key topics. In addition to the classroom curriculum, extra-curricular opportunities in mathematics are also available. Our students participate in the Ark Schools and UK Mathematics Trust individual and team maths challenges.

There are also many opportunities provided by the performing arts faculty. Every student gets involved in our music and arts programmes and many take part in our school shows, in the Ark Schools Shakespeare Festival and the Ark Music Gala. Students also take part in residential choir and orchestra weekends. We make use of our links with outside providers and hold the Arts Council ARTSMARK Gold Award for Excellence in Arts Education.

“My teachers are very inspiring and bring fun to the classroom. It is so nice going to the class being sure that my teacher cares about me.”

Zoish, Year 12



“Attainment in GCSE examinations is rising rapidly.”

Ofsted

Supporting every child

Able and Talented

We are committed to providing a personalised curriculum for every one of our students. There are Able and Talented children in every year group and our lessons, full of enrichment activities, will stretch and challenge students to ensure they reach their full potential.

If your child arrives at the academy with high prior attainment, your child’s performance will be tracked closely by senior leaders. They will check on their progress regularly to ensure that they access extra-curricular opportunities and receive advice and guidance so that they are ready for the top universities. Your child will be provided with appropriate, challenging feedback and offered the opportunity to work at higher levels within their lessons.

If your child has particular interest or talent in a certain subject, they can access a rich and wide ranging menu of clubs and activities to develop and practice their skills. Their progress in these subjects will also be tracked closely so they can achieve their full potential.

Special Educational Needs (SEN)

We place great importance on ensuring that students with special educational needs are identified, properly assessed and well supported, following best practice. SEN provision mapping provides tailored support for each student. Support may be given in class, in a small group or through withdrawal classes.

Each small school has dedicated learning advisers who work with the special educational needs coordinator and senior learning adviser to ensure excellent provision for children with SEN, EAL or Able and Talented.

English as an Additional Language

Students for whom English is an additional language benefit from our emphasis on depth before breadth in the core curriculum, getting extra support until they reach expected standards in English. Careful assessment and a combination of small induction classes and one-to-one teaching ensure that all students have full access to the academy’s learning opportunities.

“Ark Globe is great because it’s really diverse and there’s a real sense of community.”

Tumo, Year 8



“The teachers are helpful and supportive of our dreams.”

Lily, Year 8

Enrichment

We believe that learning that goes far beyond the classroom is essential in giving all our students the opportunity to experience new and inspiring activities, develop their talents and help them to become independent thinkers.

Our extensive extended school programme offers a very wide range of after school and lunchtime activities. These include football, basketball, badminton, table tennis, rugby, gymnastics, choir, song-writing, debating, art, film, science and many more! These extremely popular sessions welcome everyone and take place in our specialist facilities including our state-of-the-art 3G pitch, container gym, sound recording studio and music rooms, leading edge ICT suites and our showcase 400 capacity auditorium.

We also make the most of being so close to central London by experiencing the best theatre and museums. Our students visit top universities, take part in residential trips and work with business and enterprise to develop essential skills for the future. We invite inspiring speakers to the academy to meet with our young people, past guests have included Barak Obama, former Prime Minister David Cameron, Mayor of London Sadiq Khan, world-class athletes Colin Jackson and Donovan Bailey and leading actors from the West End.

Being part of the Ark Network of schools also brings fantastic opportunities. Each year our students take to the stage in front of 2,000 people at the Ark Music Gala at the Barbican, compete in the Ark Schools debating and spelling competitions and demonstrate their sporting talents against students from all across the UK in the Ark Schools Sports Day. We also take part in many Southwark and London schools' events, and some of our students have travelled to Washington DC and San Francisco as part of our Globe Poets group.

We are proud to be at the heart of our community and work closely with local organisations to both develop our students' leadership skills and benefit our neighbours. Recently students have launched a Southwark foodbank, hosted tea for local elderly residents and joined with the police and local businesses to create Safe Havens for young people in the area. We also invite the whole community to events such as our Summer Fair and end of term productions to celebrate our students' achievements and our local area together.



Admissions

Ark Globe Academy is a non-selective, all-through school with no religious affiliations and serves children of all abilities. The primary school has places for 60 pupils each year in two classes and 50 part time nursery places. The secondary school has a Pupil Admission Number of 180 pupils in Year 7.

Ark Globe Academy Primary children transfer automatically to Ark Globe Academy Secondary once they have completed our 'Ark Globe Academy Secondary Transfer' form and therefore do not need use Southwark Council's Common Application Form (CAF) to secure their place.

Applications for admissions from children who do not attend Ark Globe Academy Primary must be made on Southwark Council's Common Application Form (CAF).

When we admit pupils, we prioritise children with statements of special educational needs. Then, if our academy is oversubscribed, we offer places to children in the following order of priority:

- children who are in public care.
- children of a staff member who fills a post for which there is a demonstrable skill shortage as approved by Ark Schools. (This priority is limited to no more than one place in each form of entry in any year).
- children who have a sibling who already attends the school and who will continue to do so on the date of admission (for this purpose "sibling" is a whole, half or step-brother or step-sister or an adopted child resident at the same address).
- children of staff in the school may also receive priority where the parent has been employed in the academy for two or more years at the time of the application for admission (that is the year before admission). Priority is limited to no more than one place for each form of entry in any year.

- children who live closest to the school using a straight line distance from the main entrance of the academy to the main entrance to the child's home.

The school keeps a waiting list to fill any casual vacancies occurring if students leave during the academic year or withdraw from a place that has been offered.

Appeals

Parents/Carers/Legal Guardians who are not offered a place for their child are entitled to appeal to an independent committee under the provisions of the School Standards and Framework Act, 1998. Parents/Carers/Legal Guardians wishing to appeal should complete an appeals form, available from the school office or from the Ark Admissions Team, Ark Schools, 65 Kingsway, London, WC2B 6TD.

For further information on this, please contact the Admissions Coordinator at the academy.



The Ark Network

Ark Globe Academy is part of Ark, an international charity transforming lives through education. Ark has a network of 36 schools across the UK in London, Birmingham, Hastings and Portsmouth. Each school has its own unique character and ethos but are all united in the same mission — to ensure that every child, regardless of their background, has access to a great education and real choices in life.

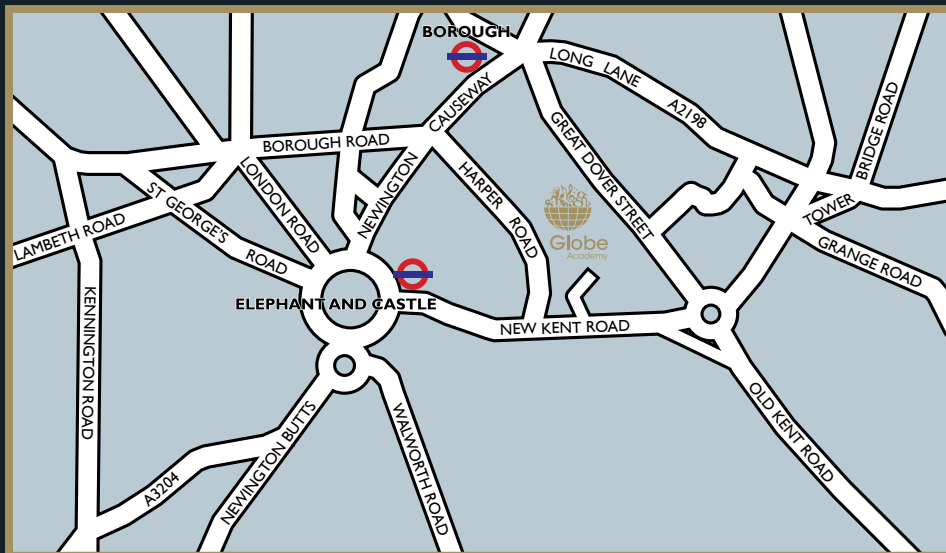
Through high expectations and a strong focus on teaching and learning, our schools have achieved some of the best results in the country, but we are about more than just academic excellence. We want our young people to develop far beyond the classroom so provide a whole host of exciting extra-curricular activities and opportunities. Highlights include network-wide sports days, debates and competitions, performing at our annual Music Gala at the world renowned Barbican Centre, taking part in work experience with some of the UK's biggest companies and summer schools at top universities.

We are dedicated to improving education systems across the globe, not just in our own schools. In partnership with others, Ark creates, incubates and launches education-focused ventures in the UK and internationally.



“Last night was amazing. Our teachers push us so that we can shine on that stage. You have to feel the music. Life’s a climb but the view is great when you reach the target.”

Sabria, Year 10, on the Ark Music Gala



Principal: Mr Matt Jones

Ark Globe Academy
Harper Road
London
SE1 6AF

☎ 020 7407 6877

✉ info@globeacademy.org

🌐 www.arkglobeacademy.org

🐦 @ARKGlobeAcademy

📘 ARK Globe Academy

All details correct at time of press, September 2017

An **Ark** school