



**Globe**  
Academy

# Ark Globe Academy Primary



Preparing our students for university and to be leaders in their community

“Achievement in the primary school is outstanding. Pupils’ attainment has been consistently above average for the past three years and their progress is well above average.”

Ofsted



# Welcome

## to Ark Globe Academy Primary

Thank you for choosing to read through our prospectus whilst considering Ark Globe Academy Primary for your child. Through our prospectus we hope that you will begin to gain an understanding of the exceptional experience and education that we can offer your child.

We have the highest ambitions and expectations for all our pupils and we aim to provide an excellent education that offers every pupil the choice of going on to university after school. Your child will also have a guaranteed place at Ark Globe Secondary, which is in the top 5% of schools nationally for achievement.

We are committed to outstanding teaching and learning which is achieved through a combination of challenge, support, encouragement and praise to ensure that all our pupils fulfil their true potential.

Our Early Years provision was judged as ‘Outstanding’ by Ofsted and we won a Specialist Schools and Academies Trust Educational Outcomes Award for our outstanding progress. The award is to recognise our achievement of being in the top 10% of primary school nationally for value added.

At Ark Globe Academy Primary you will find a warm, welcoming and purposeful environment, with a highly dedicated and enthusiastic team of staff committed to ensuring that your child receives the best education possible.

We very much welcome visits to the school, so if you would like to find out more, please contact us to make an appointment and we would love to show you around.

**Samantha Colburn**  
Primary Principal, Ark Globe Academy Primary



It gives me great pleasure to welcome you to Ark Globe Academy. We are an all-through school. Children joining us at age three can stay with us until they leave school at 18 ensuring consistency in their education and the establishment of strong and lasting relationships.

Ark Globe Academy is a happy school and we maintain high standards of courtesy, respect and discipline. Our pupils wear their uniform with pride.

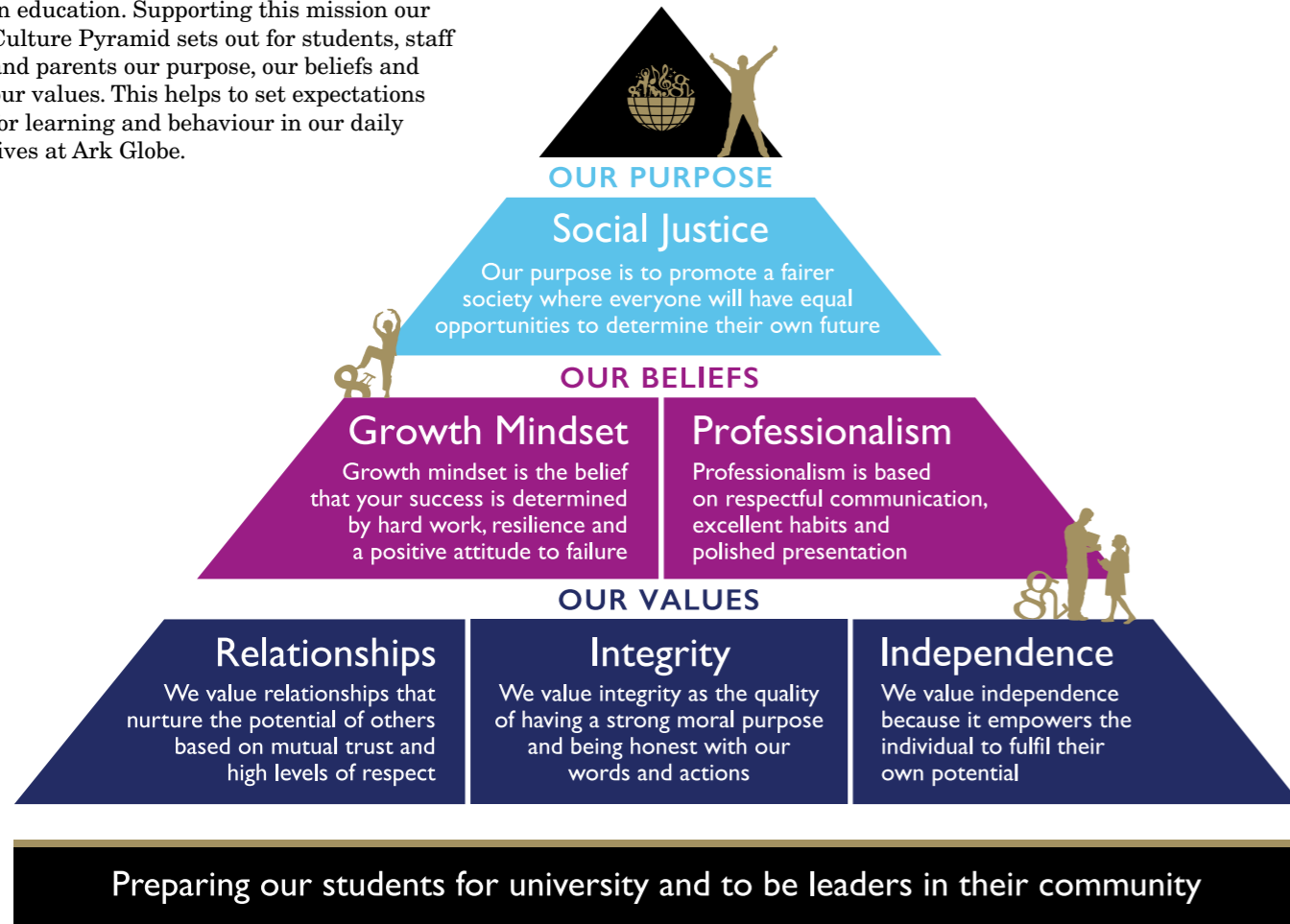
Please enjoy reading more about our brilliant primary school and come and visit us to see what we can offer your child.

**Matt Jones**  
Principal, Ark Globe Academy

# Our Culture Pyramid

## Our mission

Our mission is to prepare our pupils for university and for them to become leaders in their community. Our aim is for Ark Globe Academy to become a beacon of excellence in education. Supporting this mission our Culture Pyramid sets out for students, staff and parents our purpose, our beliefs and our values. This helps to set expectations for learning and behaviour in our daily lives at Ark Globe.



# Academic achievement – no excuses

Ark Globe Academy has very high expectations for all its pupils. With good teaching, encouragement and support every child can realise his or her full potential.

## Our Ethos: Personal responsibility and mutual respect

We maintain a respectful and orderly environment throughout the academy. We teach and encourage pupils to behave well and take responsibility for their actions.

## Commitment

Families and teachers sign a home-school agreement, demonstrating our shared commitment to helping each child succeed.

## An all-through education

Ark Globe Academy has classes from Nursery to Sixth Form, Ark Globe pupils can spend their school career with us, building strong bonds with friends and easing their transition to secondary school. Siblings are prioritised in the admissions process so that they can attend the same school.

## Small schools

The Primary School is part of the academy whilst also having its own strong identity. We have our own Primary Principal and separate buildings and play areas.

## Our staff

We have a strong team of dedicated, highly qualified teachers and support staff. Your child's teacher will always be available to discuss your child's needs or any concerns you have.

## Parental involvement

Children do well when their parents are involved in their education. We encourage parents and carers involvement and build strong relationships with our pupils' families. We will send you regular newsletters and progress reports and welcome you to attend our Celebration assemblies.





# Our curriculum

## Our specialist subjects

Ark Globe Academy specialises in mathematics and the performing arts, and every child benefits from the specialisms throughout their Ark Globe career.

It is essential that every pupil has a firm grasp of mathematics. We teach a distinctive, world leading, maths curriculum. Our aim is to ensure that every child achieves mastery of mathematical concepts, computational skills, problem solving and the application of mathematics to daily life activities. We teach mathematics topics in depth so that children understand the “how” as well as the “why”.

Our music and art subjects are taught by specialist teachers and involve every pupil in creative projects that build confidence and self-discipline and contribute to the life of the academy. Our programme includes performances by pupils and by visiting artists. Our curriculum is enhanced by speaking and listening activities involving role play and drama.

Our music programme gives pupils the knowledge and skills to enjoy and develop their interest.

The primary programme focuses on singing and on instruments which are taught and played in groups. We have a school choir and teach a variety of musical instruments. All our pupils have the opportunity to perform at the Ark Schools Music Gala held at a leading concert venue each year.

## The Early Years Curriculum

The curriculum is divided into seven areas of learning:

The three **prime areas** are:

- Personal, social and emotional development
- Communication and language
- Physical development

The **four specific areas** of learning are:

- English
- Mathematics
- Understanding the world
- Expressive arts and design

We provide a stimulating indoor and outdoor learning environment where children are motivated to communicate, explore and learn independently. A carefully planned, broad range of activities promotes a rich, age appropriate, learning experience across the curriculum.

Reception pupils follow the Ark Schools Early Years Foundation Stage curriculum which gives every child a firm foundation:

**English** — focusing on speaking and listening, reading, writing using synthetic phonics (Read Write Inc.) and other reading strategies.

**Mathematics** — our world leading mathematics programme uses practical and written activities that help children develop their numerical and problem-solving abilities.



98% of our Year 1 pupils passed their Phonic Screening test in 2017.

“Every child learns to read at Ark Globe Academy Primary”

Ruth Miskin, Founder of the ‘Read Write Inc.’ phonics programme

### Mathematics Mastery

Ark Schools follow a unique maths curriculum based on the world-leading Singapore approach; Mathematics Mastery.

Mathematics Mastery complements the new 2014 national curriculum effectively by:

- An emphasis on pupils mastering the basic knowledge and skills in mathematics. By studying fewer areas of learning pupils develop a greater understanding of whole number, fractions, geometry and statistics.
- Visual modelling helps pupils make the links between a concrete understanding and abstract application of mathematical concepts.
- Fewer areas of learning mean that teachers can focus on quality delivery supported by a rigorous scheme of work.

“In the 2017 Key Stage two mathematics tests, 88% of Ark Globe’s primary pupils achieved national age related expectations.”

### English

This is divided into three areas:

#### Speaking and listening

The children are given opportunities to experience different kinds of speaking and listening. It is essential that they know how to express themselves and how to listen to other people’s opinions and ideas. We use a wide range of drama techniques as a means of providing opportunities for the children to express themselves in different situations.

#### Reading

Our aim is that every child should enjoy reading; both for life skills and pleasure. Children learn to read through a synthetic phonics programme (Read Write Inc.). This programme is complemented with a range of reading comprehension activities. Children also learn through individual reading and paired reading. Children are encouraged to become independent readers as they move through the school and we strongly encourage parents to read with their children. Our expectation is that all pupils read every night at home.

#### Writing

We teach both narrative and non-fiction writing within units of work linked to high quality inspiring texts often by well known authors. Extended writing tasks are completed on a weekly basis across the curriculum.

“At the end of Key Stage Two (age eleven), 84% of pupils achieved the national age related expectations in writing whilst in reading 78% of pupils reached the national expectation.” SATs 2017



### Science

Children take part in investigative activities and experiments through which they acquire and develop scientific knowledge, skills and understanding. Science is taught separately as well as through cross-curricular links.

### Computing

Pupils have access to the technology including interactive whiteboards and wireless laptops to enhance their learning and learn computer skills. Children learn programmes including word processing, data handling and graphics. We also incorporate the use of computing into other subjects.

### Religious Education

We focus on developing pupils’ spiritual, moral, social and cultural development by exploring a range of beliefs. Pupils are taught to be understanding and considerate to others both in the school and the wider community.

### Foundation subjects

History, geography, design and technology, PHSE (Personal, Health, Social, Emotional), music and art are taught through a creative and themed approach as well as in distinct lessons. We keep parents up to date on the topics being covered across each phase through our termly curriculum overviews.

### Physical Education

Regular PE is part of the curriculum and taught by highly qualified specialists. We encourage active play every day. Pupils are taught gymnastics, dance and athletics as well as team sports.

### Assessment

Formal and informal assessments take place on a regular basis. Parents receive progress reports twice a year which includes targets for their children to work towards.

### Enrichment and extra-curricular activities

Education is about creative as well as academic achievement. We try to broaden our pupils’ horizons and experiences through a wide variety of extra-curricular activities both sporting and non-sporting and to reinforce learning through regular educational visits.

### Assembly

We hold assemblies throughout the week and parents are invited to our Celebration assembly as well as other assemblies and events throughout the year.

### Homework

Children are required to read at home every night and complete a reading record daily. Each child receives homework every week in English and maths and sometimes other subjects. In addition, weekly spellings are also set.

# High expectations for every child

## Equal opportunities in the curriculum

We provide equal opportunities for all children. We recognise that different individuals have different needs. Our academy ethos encourages mutual respect and the expectation that everyone will fulfil their potential.

## Inclusion

We are committed to enabling every pupil to achieve his or her potential. We will follow the Government's 'New Code of Practice' and Ark's 'SEND' policy to ensure early identification and high impact interventions are put in place. Support may be given in class, in a small group or out of class and will be delivered by a skilled team of teachers and co-teachers.

## Able and Talented

We want all our pupils to maximise their potential and ensure that all our pupils are appropriately challenged and supported. Careful identification and assessment enables us to provide suitable challenge and differentiation to extend the learning of all our pupils.

## English as an additional language (EAL)

Pupils for whom English is an additional language will benefit from emphasis on the core curriculum, gaining extra support until they reach the expected achievement for their age in English. Through careful assessment and a combination of small learning groups, our pupils have full access to the learning opportunities provided by the school.



“The progress of children in the early years is very rapid.”

Ofsted



## Lunch

A healthy lunch is central to a child's ability to learn. We encourage our pupils to eat a healthy meal each day which is cooked on the premises and caters for a broad variety of diets. Pupils may bring a healthy packed lunch, if preferred. For pupils attending a Southwark primary school setting, they will be eligible for a free, healthy school lunch.

## Attendance and hours

It is important that pupils attend school on time every day. We discourage absence during term time unless it is unavoidable. Please be aware that any holiday during term time is not authorised. School begins at 8:30am sharp and finishes at 3:30pm from Reception to Year 6. Our Nursery pupils have the choice of attending a morning or afternoon session:

Morning session: 8.30–11.30am

Afternoon session: 12.30–3.30pm

## Uniform

All children must wear school uniform. Details are available from the school and on our website [www.arkglobeacademy.org](http://www.arkglobeacademy.org). The school jumper, tie, bag and PE kit can only be purchased from Whitehall Clothiers. All other items of uniform can be purchased from any retailer.



# Progressing through the academy

## Our Nursery

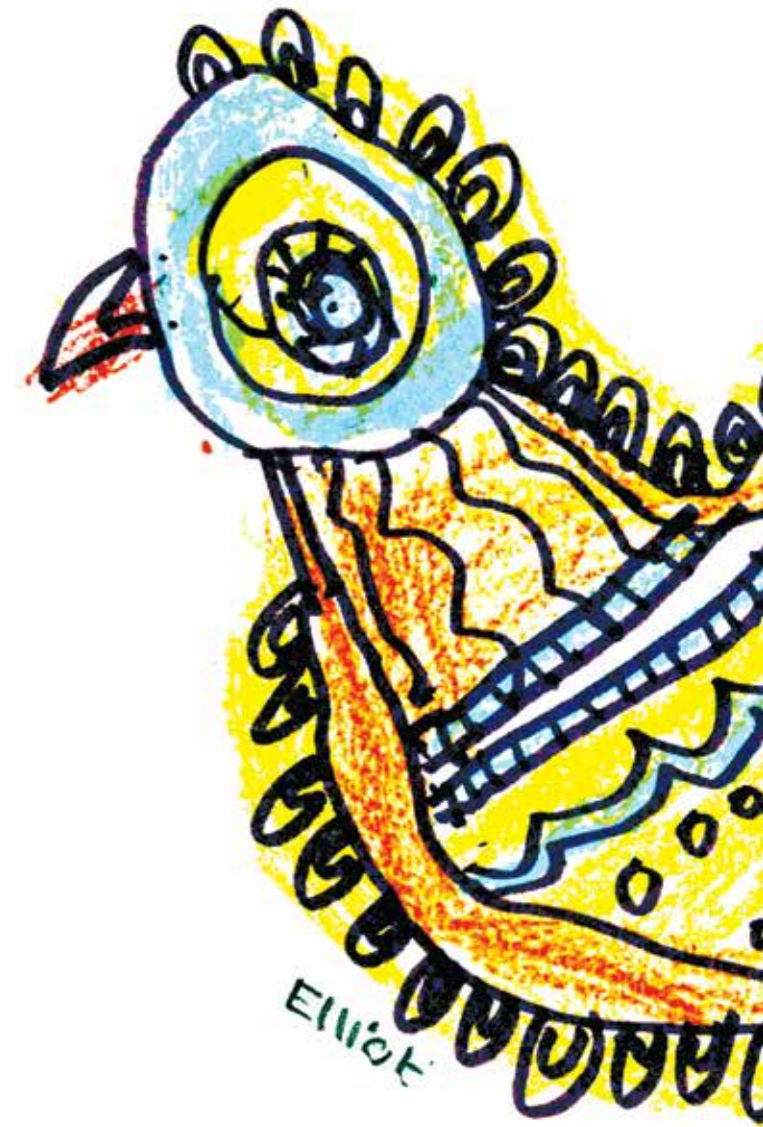
Our stimulating, purpose built nursery offers a daily morning or afternoon session where the intake is 25 pupils per session. Children in the nursery are often learning how to be apart from their parents for the first time. We teach them the skills and understanding to help them to learn independently, communicate effectively and work with others. To move into our Reception you must apply online through the Southwark Admissions website.

## Reception class

In Reception children begin to move from play-based learning activities to more structured practical activities. We offer full-time places for 60 children in one intake.

## Transition to secondary school

All year 6 pupils have an automatic place in Ark Globe Academy secondary school if they wish to transfer and there is no requirement to complete an online application. As an all-through academy we provide the stability and continuity through the important transition to secondary school. Should a pupil wish to attend a different secondary school, please do not hesitate to contact the Primary Principal.



# Admissions

Ark Globe Academy is a non-selective, all-through school with no religious affiliations and serves children of all abilities. The primary school has places for 60 pupils each year in two classes and 50 part time nursery places. The Secondary school has a Pupil Admission Number of 180 pupils in year 7. Applications for admission must be made on Southwark Council's Common Application Form (CAF). When we admit pupils, we prioritise children with statements of special educational needs. Then, if our academy is oversubscribed, we offer places to children in the following order of priority:

- children who are in public care.
- children of a staff member who fills a post for which there is a demonstrable skill shortage as approved by Ark Schools. (This priority is limited to no more than one place in each form of entry in any year).
- children who have a sibling who already attends the school and who will continue to do so on the date of admission (for this purpose "sibling" is a whole, half or step-brother or step-sister or an adopted child resident at the same address).
- children of staff in the school may also receive priority where the parent has been employed in the academy for two or more years at the time of the application for admission (that is the year before admission). Priority is limited to no more than one place for each form of entry in any year.
- children who live closest to the school using a straight line distance from the main entrance of the academy to the main entrance to the child's home.

The school keeps a waiting list to fill any casual vacancies occurring if students leave during the academic year or withdraw from a place that has been offered.



## Appeals

Parents/Carers/Legal Guardians who are not offered a place for their child are entitled to appeal to an independent committee under the provisions of the School Standards and Framework Act, 1998. Parents/Carers/Legal Guardians wishing to appeal should complete an appeals form, available from the school office or from the Ark Admissions Team, Ark Schools, 65 Kingsway, London, WC2B 6TD.

For further information on this, please contact the Admissions Coordinator at the academy.

# The Ark Network

Ark Globe Academy is part of Ark, an international charity transforming lives through education. Ark has a network of 36 schools across the UK in London, Birmingham, Hastings and Portsmouth. Each school has its own unique character and ethos but are all united in the same mission — to ensure that every child, regardless of their background, has access to a great education and real choices in life.

Through high expectations and a strong focus on teaching and learning, our schools have achieved some of the best results in the country, but we are about more than just academic excellence. We want our young people to develop far beyond the classroom so provide a whole host of exciting extra-curricular activities and opportunities. Highlights include network-wide sports days, debates and competitions, performing at our annual Music Gala at the world renowned Barbican Centre, taking part in work experience with some of the UK's biggest companies and summer schools at top universities.

We are dedicated to improving education systems across the globe, not just in our own schools. In partnership with others, Ark creates, incubates and launches education-focused ventures in the UK and internationally.

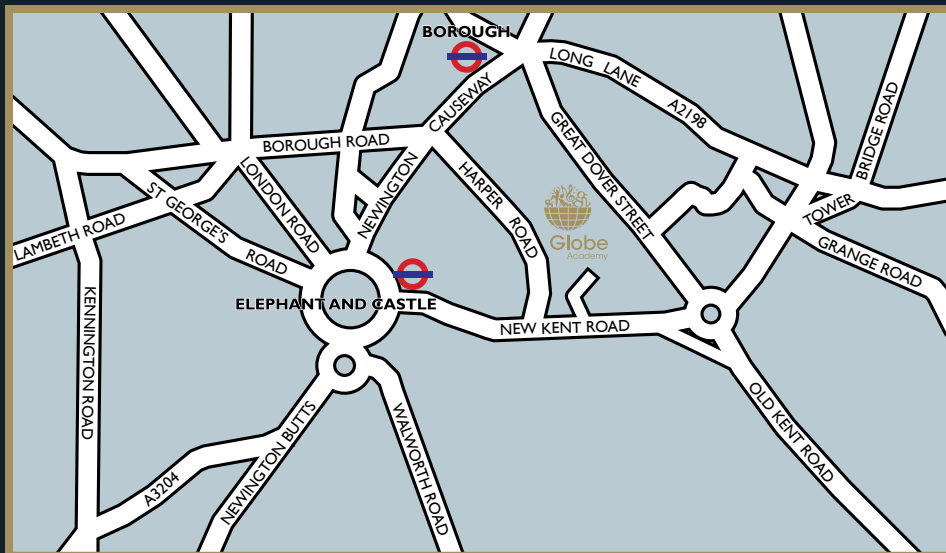


“The debating competition was really amazing as it taught me how to respectfully counter other people’s opinions.”

Anthony, Year 6  
on the Ark Schools  
Debating Competition.







Primary Principal: Ms Samantha Colburn  
Principal: Mr Matt Jones

Ark Globe Academy  
Harper Road  
London  
SE1 6AF

☎ 020 7407 6877  
✉ [info@globeacademy.org](mailto:info@globeacademy.org)  
🌐 [www.arkglobeacademy.org](http://www.arkglobeacademy.org)  
🐦 @ARKGlobeAcademy  
📘 ARK Globe Academy

All details correct at time of press, September 2017

*An Ark school*